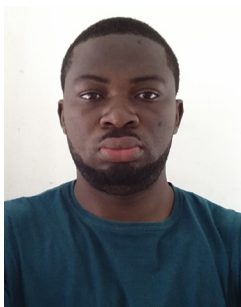


GDN-EIB Fellows



AWEL, Yesuf

Yesuf holds a PhD in economics from Maastricht University. His research focuses on impact evaluation of development interventions, development finance, risk and insurance, poverty and social protection, structural transformation and industrialization, and applied econometrics. Yesuf is a recipient of several scholarships and research grants both nationally and internationally. Recently, he was a Young African Professional fellow at the United Nations Economic Commission for Africa (ECA). Since January 2015, he has been working with the ECA as a research fellow and later an Economist consultant. At ECA, he contributes to macroeconomic forecasting and the annual flagship publications on Economic Report on Africa and World Economic Situations and Prospects, among others. He was a PhD fellow at UNU-MERIT and Lecturer at Mekelle University. He has over 10 years teaching experience and thesis supervisions at universities. As an EIB-GDN fellow, among others, he will evaluate impact of selected IFE projects in the ACP regions.



KEMEZE, Francis Hypolite

Dr. Francis Hypolite Kemeze is a consultant at the International Food Policy Research Institute, Ghana working on the assessment of the District Value Chain Committee program. Francis was previously a research associate, working on a 3 year RCT-USAID funded project on agricultural credit, index insurance and technology adoption. Francis also served as visiting scholar within the Department of Agricultural, Environmental, and Development Economics at The Ohio State University, USA and interned with the UNU-Institute for Natural Resources in Africa, the African Center for Economic Transformation and the Cameroonian National Social Insurance Fund. He holds a B.Sc. in Economics from Université de Dschang, an M.Phil. in Economics from Université de Yaounde II, Cameroon and a Ph.D. in Applied Agricultural Economics and Policy from the University of Ghana. He is specialized in Development Economics and Finance. His research interests include impact evaluation, value chain analysis, warehouse receipts finance, trade and poverty analysis.



NOUWOUE NJOFANG DTCHOUYA, Guylaine

Guylaine Nouwoue is a statistician and an evaluation specialist with more than 10 years experience in data management from collection to dissemination. She has strong skills in quantitative and qualitative analysis as well as in evaluation including impact assessment and research. She provides adequate economic policies to improve private sector development and business environment in Cameroon and in Côte d'Ivoire. In recent months, she designed and coordinated the impact evaluation of the Cameroon Incentives law, and participated as a co-evaluator at the final evaluation of a WASH project SAN-CAM in the Far North Region of Cameroon. Guylaine graduated from the prestigious high school of statistics school and applied economics of Côte d'Ivoire as a statistician engineer and holds a Master's degree in Statistics and Applied Econometrics from the University of Toulouse - France.



OKYERE, Charles Yaw

Charles Y. Okyere completed his doctoral (Ph.D.) studies at the Department of Economic and Technological Change, Center for Development Research (ZEF), University of Bonn, Germany. He also holds a Master of Philosophy in Agricultural Economics from the University of Ghana, Legon. In 2007, he graduated with the second class upper division in Agriculture Technology (Agricultural Economics and Extension option) from the University for Development Studies, Tamale, Ghana. His interest areas include the application of behavioral, experimental and quasi-experimental economic techniques to health, education, agriculture, and welfare. He has skills in conducting socio-economic surveys (for instance, data collection and analysis) using both quantitative and qualitative techniques.



OMOJU, Oluwasola

Oluwasola is a Nigerian national. He holds a doctorate degree in applied economics, with specialisation in energy economics from Xiamen University, China. Prior to that, he holds bachelor's and master's degrees in economics from the Universities of Ilorin and Lagos (Nigeria) respectively. He has cognate working experience in the financial sector and think tanks. He was a member of the team that provides economic and research support to the Nigerian parliament through his work at the National Institute for Legislative Studies, Abuja. His research interests encompass energy economics, public policy, public financial management and Africa sustainable development. He is a recipient of several awards and grants, including the 2014 CODESRIA-CLACSO-IDEAS South-South Collaborative Research Grant.



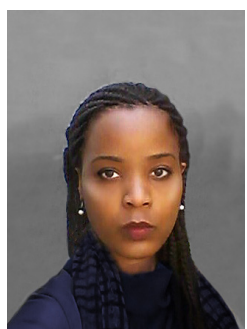
SANGARE, Mariam

Mariam Sangare is from Mali. She completed her Ph.D. on Microfinance in 2013 with a focus on the relationships between institutions funding and services quality for customers (University of Toulouse, France). Her research interests cover low-income people's demand for financial services, impacts analysis of Microfinance services, funding and governance of microfinance institutions, and questions around financial services supply and demand matching. She took part in the RUME project (Rural Microfinance and Employment) in 2011, which was aimed to evaluate the outcomes of access to Microfinance in terms of employment and migration in rural areas of India, Mexico, Morocco and Madagascar. As a research fellow at the IMTFI (University of California-Irvine) in 2014-2015, she conducted a research project on the impacts of Mobile Banking on savings practices in Mali. She is currently a postdoctoral researcher at CESSMA (Paris 7 Diderot University/ Institute for Research for Development-IRD) in France.



SARR, Bassirou

Bassirou Sarr is a Doctoral candidate at the Paris School of Economics. His research interests are in development, public finance, and applied economics. Bassirou has conducted impact evaluation and experimental economics research in Mali, Senegal, and Benin. These research projects span areas as diverse as taxation and applied game theory. As part of his dissertation on state taxation and redistribution, he is the Principal Investigator on innovative research projects in collaboration with Senegal's Directorate of Taxes and Domains to address research questions on VAT design, personal income taxes, and property tax administration. Bassirou obtained a Master of Science degree in Analysis and Policy Economics. He also graduated from Carleton College where he earned a Bachelor of Mathematics.



UWINGABIYE, Gloria

With broad experience working in the private sector, Gloria has now moved into the development sector, working for multilateral financial institutions and development organizations, and contributing to projects in several countries in various capacities. Over the last three years, she has been working on different development projects, including private equity investments, projects evaluation, and education programmes alongside pursuing her doctoral studies in international development at the University College London (UK). Prior to that, she served as a Programme and Finance Manager for a pan-African institution and an Evaluation Consultant for the African Development Bank. Gloria is originally from Rwanda and holds a master's from ICHEC Business School (Belgium). She also has a Master's in Financial Risk Management jointly offered by FUSL and Louvain School of Management (Académie Louvain), has just completed her MPhil in Research Methods from UCL(UK), and is CFA Level 2 candidate.



YITBAREK, Eleni

Eleni is a Postdoctoral Research Fellow at the University of Pretoria, South Africa. Prior to that, she obtained her Ph.D. from Maastricht University in Economics. She had also received a Master's from Maastricht University in Public Policy and Human Development, specializing in social policy financing. Since an early age, Eleni has a keen interest in economic development, particularly in the role social and economic policies play in it. She is particularly interested in questions such as: why some people remain poor while others become prosperous? What drives social mobility in developing countries? In her relatively young academic career, Eleni is making a contribution to applied research in poverty dynamics, socioeconomic effects of idiosyncratic and transient shocks, and gender-based social mobility in the context of Africa. She hopes one day her research will have a significant and concrete contribution towards informed policy making that aims to improve the lives of the poor.